



ROTO 50.26



PERFORMANCE AND FEATURES
ROTO 50.26
ROTO 50.26 S
ROTO 50.26 S Plus
PERFORMANCE

Total unladen weight (kg)
Maximum capacity (kg)
Lifting height (m)
Maximum reach (m)
Maximum operating height (m)
Maximum operating reach (m)
Capacity at maximum height (kg)
Capacity at maximum reach (kg)
Lateral boom movement (mm)
Tilting correction (%)
Boom sections

16600
4950
25,9
22,9
9,7
7
1500
150
-
-
5

16600
4950
25,9
22,9
9,7
7
1500
150
-
± 12; ± 4
5

17300
4950
25,9
22,9
9,7
7
1500
150
-
± 12; ± 4
5

POWERTRAIN

Turbo motor
Displacement/cylinders
Engine Power (kW/HP)
Anti-pollution technology
Reversible fan
Maximum speed (km/h)
Fuel tank (l)
AdBlue tank (l)
Hydrostatic transmission
EPD
Auto-revving joystick
Axles - Reducers
Machine brakes
Automatic parking brake

DEUTZ TCD
3600/4
55,4/75
STAGE V, DOC+DPF
-
11/25
150
-
● - 2V
●
●
Drop portal - RR700
Dry discs
●

FPT NEF45
4500/4
125/170
STAGE V - DOC + DPF+ SCR
-
11/40
150
43
● - 2V
●
●
Drop portal - RR700
Dry discs
●

FPT NEF45
4500/4
125/170
STAGE V - DOC + DPF+ SCR
-
11/40
150
43
● - 2V
●
●
Drop portal - RR700
Dry discs
●

HYDRAULIC

Hydraulic pump
Flow rate/pressure (l/min – bar)
Hydraulic tank
Hydraulic outlet at the top of the boom
Rear hydraulic outlets

LS + FS
103,5 - 250
120
●
-

LS + FS
138 - 250
120
●
-

2 - LS + FS
138+100 - 250/230
120
●
-

CAB

Cab configuration
ASCS Adaptive Stability Control System
FOPS LIV II cab
ROPS cab
Cab commands
Tilting Cab
Reverse shuttle

Premium
Full
●
●
Electronic joystick control
-
Dual Reverse

Premium
Full
●
●
Electronic joystick control
-
Dual Reverse

Premium
Full
●
●
Electronic joystick control
●
Dual Reverse

CONFIGURATION

Cab suspension
Boom suspension
Suspension on axles
Work headlights on cab
Sun blind
Tac-lock
Provision for a platform
Two floating forks
Inching-Control
Four-wheel drive
Four-wheel steering
Three steering modes
Standard tyres
Optional tyres
Stabilisers
Turret rotation
Type approval as an agricultural tractor
Approval with PNEUMATIC braking
Approval with HYDRAULIC braking
PTO
3-point linkage

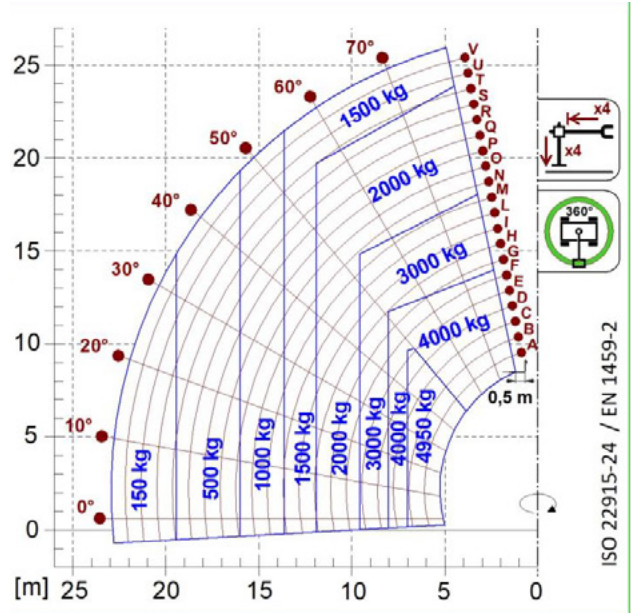
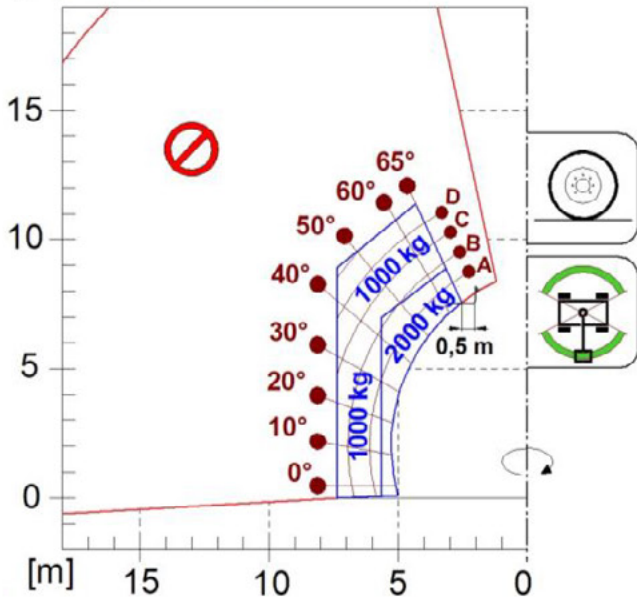
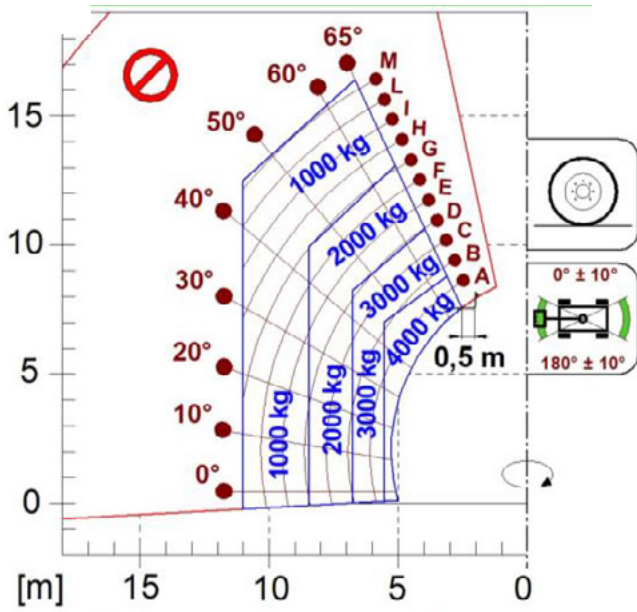
-
-
-
○ - Led
●
●
●
●
-
●
●
●
18-22.5
500/60-R22,5; 445/65-R22,5
Multiposition (2 mode: full retracted-extend) 600°
-
-
-
-
-

-
-
●
○ - Led
●
●
●
●
-
●
●
●
18-22.5
500/60-R22,5; 445/65-R22,5
Multiposition (2 mode: full retracted-extend) continuous
-
-
-
-
-

-
-
●
○ - Led
●
●
●
●
-
●
●
●
18-22.5
500/60-R22,5; 445/65-R22,5
Multiposition continuous
-
-
-
-
-

- Not Available. ● standard. ○ optional.

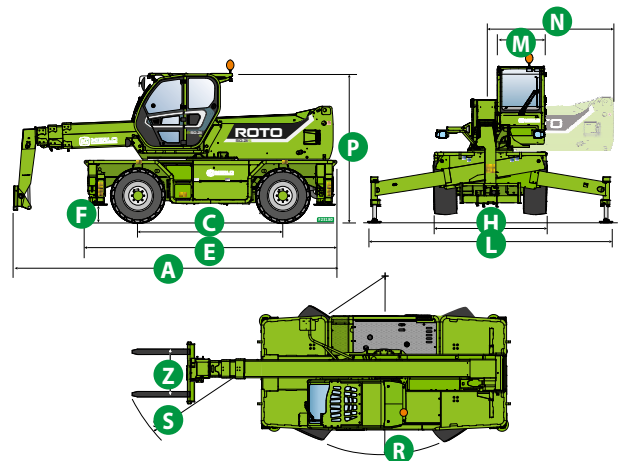
LOAD CHARTS

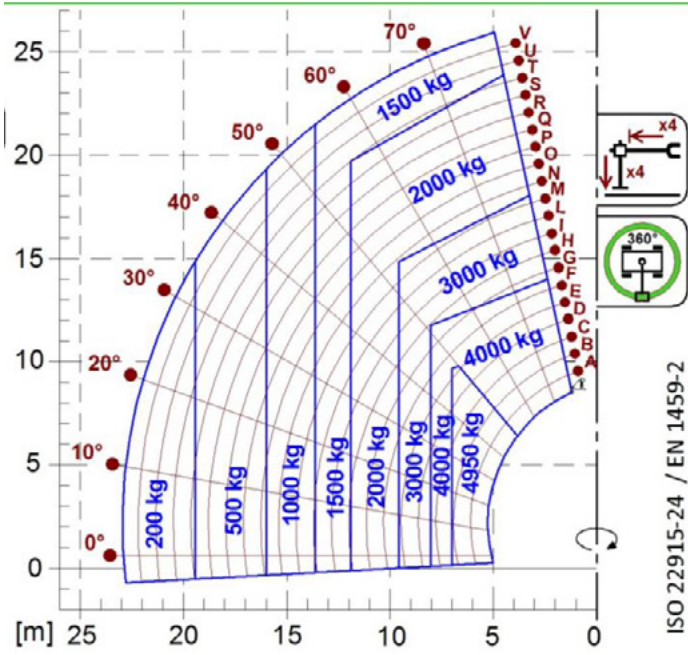


ROTO50.26

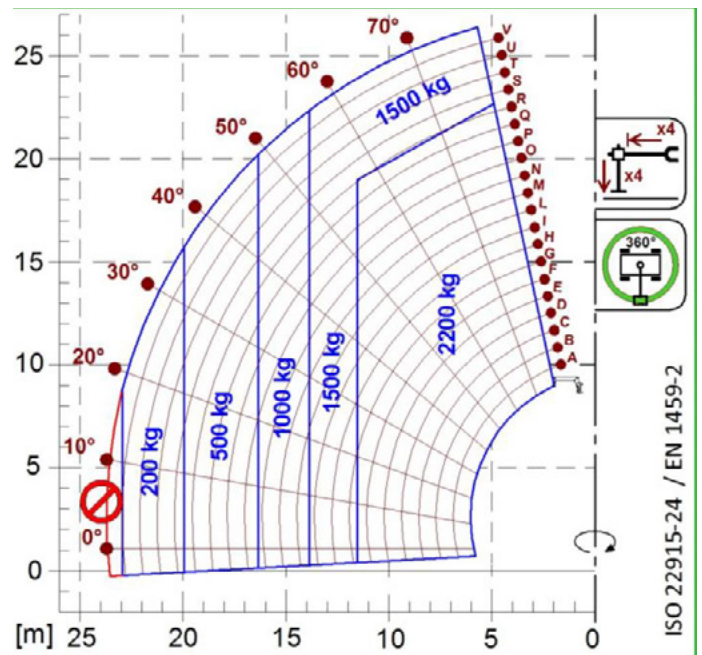
DIMENSIONS

	ROTO 50.26	ROTO 50.26 S	ROTO 50.26 S PLUS
A (mm)	7150	7150	7150
C (mm)	3070	3070	3070
E (mm)	5370	5370	5370
F (mm)	370	370	370
H (mm)	2430	2430	2430
L (mm)	5010	5010	5010
M (mm)	1010	1010	1010
N (mm)	2600	2600	2600
P (mm)	3120	3120	3120
R (mm)	3850	3850	3850
S (mm)	6310	6310	6310
Z (mm)	850	850	850

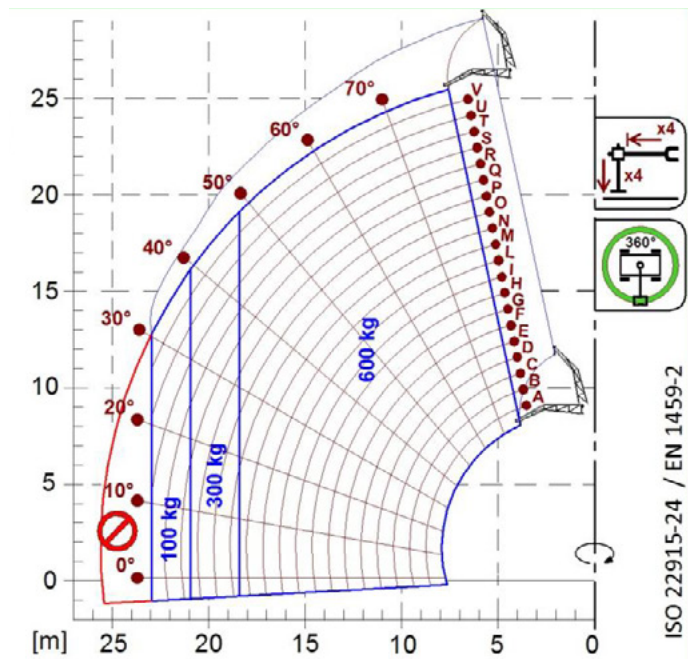




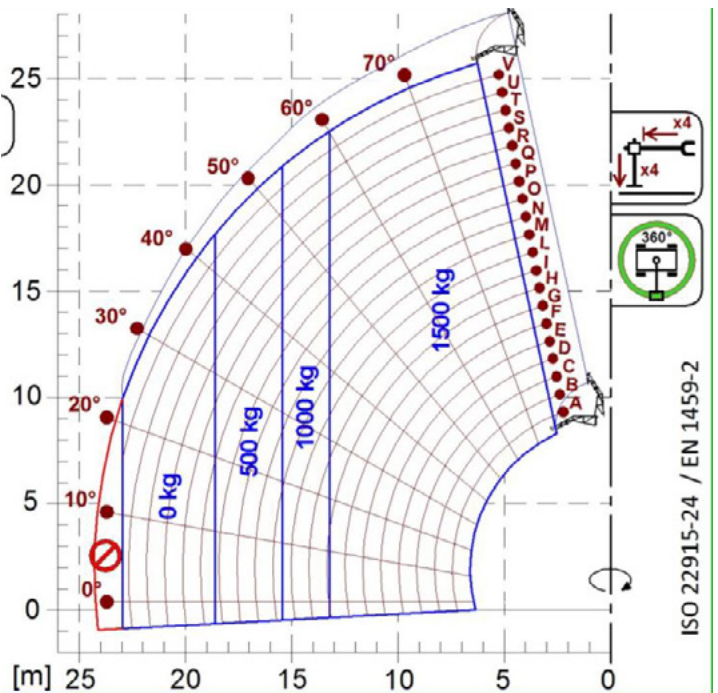
A1000



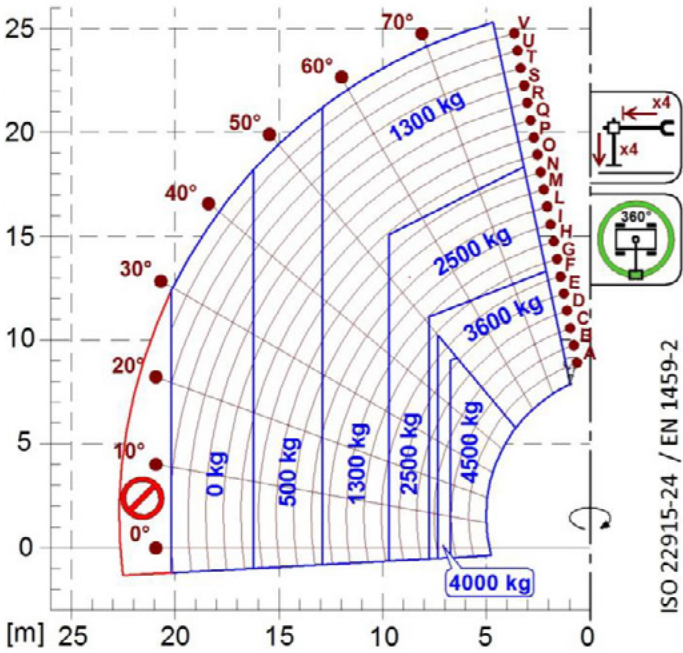
A1118B



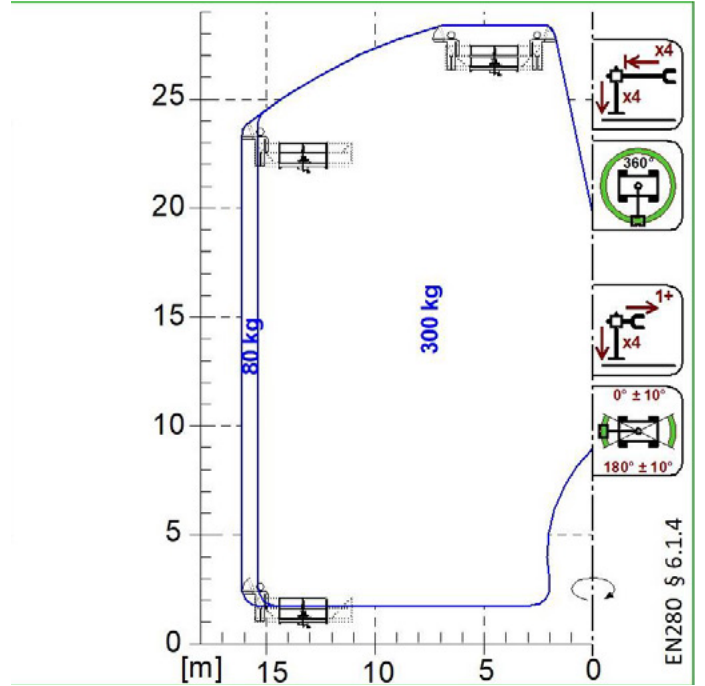
A1200B
A1300B



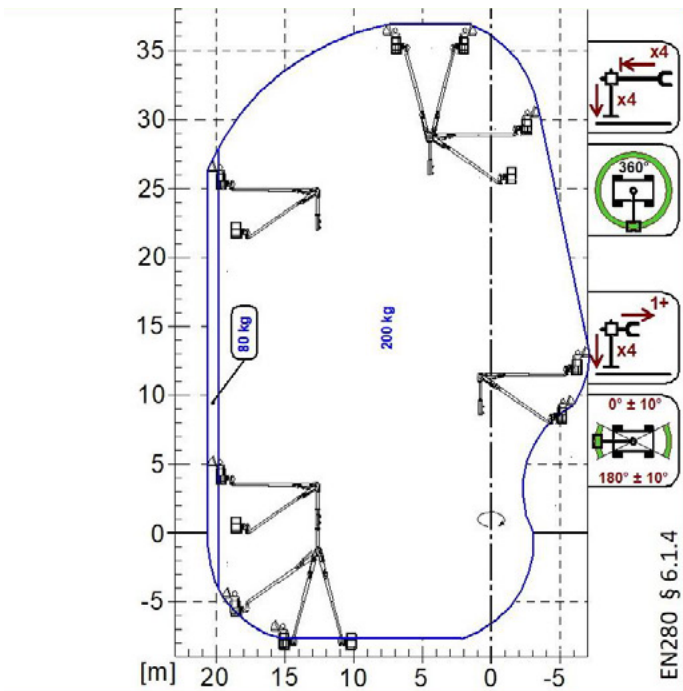
A1210B
A1310B



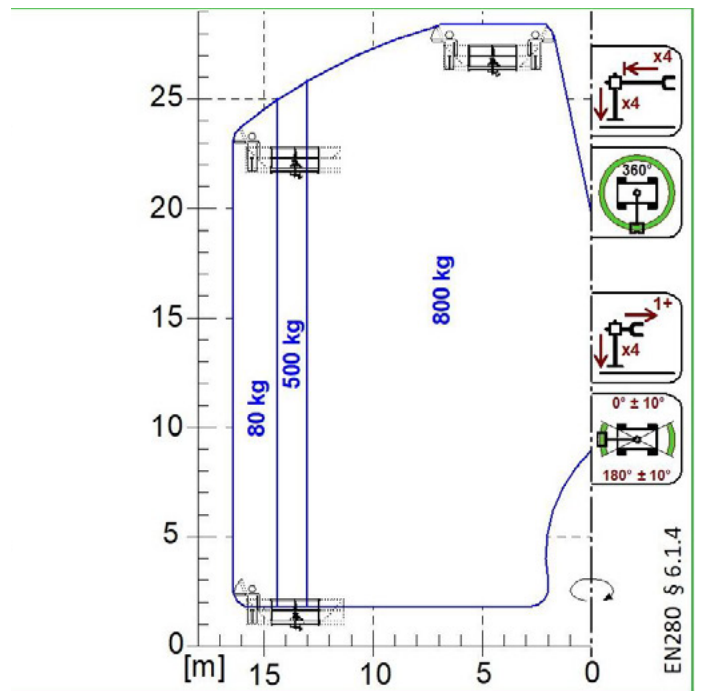
A2765
A2766



A1827
A1839



A1873



A1831



MERLO S.P.A.
Via Nazionale, 9
12010 S. Defendente di Cervasca
(Cuneo) Italia
Tel. +39 0171 614111
Fax +39 0171 684101

info@merlo.com
www.merlo.com

Your Merlo dealer

DS_ROT05026_0521_ENG